



FIRST CO.
P.O. BOX 270969 - DALLAS, TEXAS 75227
PH. (214) 388-5751 | FAX (214) 388-2255
WWW.FIRSTCO.COM

WCX12 Series

Thru-the-wall Split Condensing Unit - R-410A

- ▶ WCX12-AB
- ▶ WCX12-BB



WCX12 Series

APPLICATION

These condensing units are excellent replacement products for the thousands of existing through the wall condensing units. (See dimensional information on pages 3 and 5).

THROUGH-THE-WALL VS CONVENTIONAL CONDENSING UNITS

- **Lower Installation Costs** - WCX12 condensing units install on the same floor as the apartment, town home, or condominium, resulting in considerable first cost savings in refrigerant, refrigerant piping, and electrical wiring compared to condensing units installed on the ground or roof.
- **Easier to Service** - Being located on the same floor as the apartment, town home, or condominium, service and routine maintenance of the WCX12 is much easier and can be performed by one person.
- ✓ Eliminates theft problems
- ✓ No costly landscaping needed to hide the units
- ✓ No condensing unit support pads required
- ✓ No additional roof support expenses
- ✓ No chase ways to roof or ground needed
refrigerant lines

WCX Series units are sold and intended for use only with blower coil and air handler units with ECM motors.

First Co's customer is ultimately responsible for confirming which of their indoor coils are compatible with these products, and which expansion valves (if any) are required for proper operation.



FEATURES:

- Factory charged with R-410A refrigerant (charge will need to be field-adjusted)
- Unique cabinet design - unit side panels fit inside rather than outside the base pan to improve water containment on the sides of the cabinet
- Extra-high efficiency scroll R-410A compressor
- High pressure switch
- Propeller type fan - Moves more air over the condenser coil at lower operating watts than standard "squirrel cage" type blower
- Sloped base pan - Positive water drainage from the unit to the building exterior
- Plastic coated coil guard
- Filter / drier

OPTIONAL ACCESSORIES: (see pages 4 and 5)

NOTE:
R-410A refrigerant oil is not compatible with R-22 oil. Therefore, when R-410A outdoor units are replacing existing R-22 outdoor units, the indoor evaporator coil must be replaced with a new one, the coil must include an R-410A TXV, and the interconnecting refrigerant lines flushed.

WCX12-AB Series

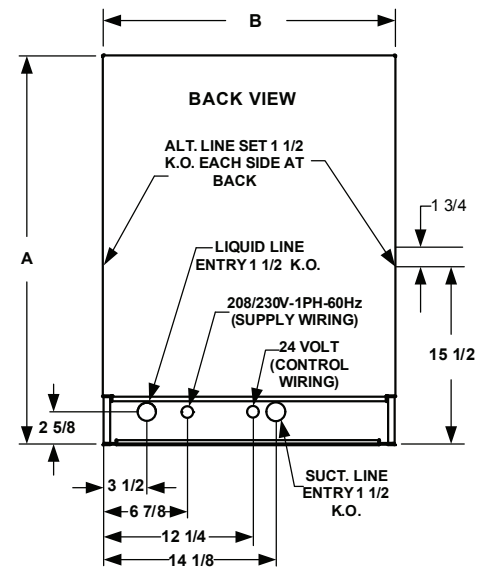
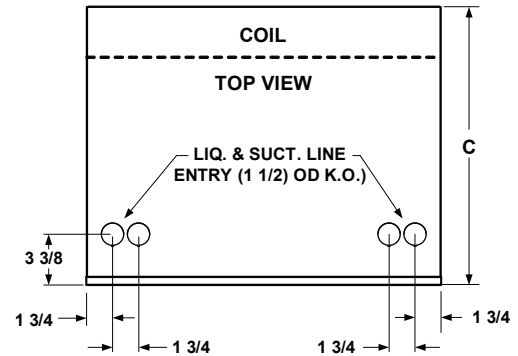
ELECTRICAL DATA 208/230V - 1PH - 60 Hz						
UNIT MODEL	COMPRESSOR		CONDENSER FAN		MIN. CIR. AMPACITY	MAX. HACR BREAKER
	LRA	RLA	FLA	HP		
18WCX12-AB	48	9.0	1.2	1/4	13	20
24WCX12-AB	58.3	12.8	1.2	1/4	18	30
30WCXA12-AB	73	14.1	2.8	1/3	21	30

NOTE:
Compressor start assist devices (capacitor and start potential relay) may be required on WCX units with scroll compressors for installations with long line length, unusually high or low ambient operating conditions, thermostatic expansion valves or any other situation which can lead to start off cycle pressure equalization and excessive compressor starting problems.

CERTIFIED COMBINATION RATINGS (1)				
UNIT MODEL	TOTAL BTUH COOLING	SEER	INDOOR COIL	
18WCX12-AB	18,000	12.0	20VOHBX	
24WCX12-AB	23,800		32VOHBX	
30WCXA12-AB	27,800		RBHP-21J***	

(1) SEER and capacity information are tested combination ratings and certified by First Co. to the U.S. Department of Energy. DOE maintains a public database that includes a complete listing of all appliance certifications. To view (and search) this listing, go to: <http://www.regulations.doe.gov/certification-data/>

PHYSICAL DIMENSIONS					
UNIT MODEL	A	B	C	LIQ/SUCT. LINE CONN. (SWEAT)	APPROX. SHIP WT.
18WCX12-AB	32	24	19	3/8 O.D. / 3/4 O.D.	200
24WCX12-AB					
30WCXA12-AB					



NOTE:
Liquid line valve is located on left side.
Suction line valve is located on right side.

NOTE:
R-410A refrigerant oil is not compatible with R-22 oil. Therefore, when R-410A outdoor units are replacing existing R-22 outdoor units, the indoor evaporator coil must be replaced with a new one, the coil must include an R-410A TXV, and the interconnecting refrigerant lines flushed.

WCX12-AB Series

OPT. ARCH. GRILLE (FIELD INSTALLED)				
PART NUMBER	FOR USE ON	DIMENSIONS		
		H	W	D
G200A(PPA)(S) (Standard)	18WCX12-AB 24WCX12-AB 30WCXA12-AB	32	24	1-1/4
G210A(PPA)(S) (Hurricane) (Requires Hurricane Sleeve)	18WCX12-AB 24WCX12-AB 30WCXA12-AB	34-5/8	26-1/2	1-1/8

NOTES:

- "A" = Clear Anodized
"PPA" = Paint Prepared Aluminum
"S" Custom Painted
- Grille screws to the "face" of the condensing unit in place of the factory wire guard.
- Grilles can be factory painted almost any color. Contact the factory for additional information and cost.



(Optional Architectural Grille)

OPTIONAL INSTALLATION SLEEVE(S) (See matching grilles)					
PART NUMBER	FOR USE ON	DESCRIPTION	DIMENSIONS		
			H	W	D
928-3 (Standard)	All "AB" models only	Sleeve installs in rough-in to facilitate condensing unit installation and removal for service	33-3/8	24-1/4	11-3/4
928-3H (Hurricane)	All "AB" models only	Hurricane Sleeve	34-1/8	25-3/8	13-3/4



WARNING AVERTISSEMENT ADVERTENCIA
Cancer and Reproductive Harm
Cancer et Troubles de l'appareil reproducteur
Cáncer y Daño Reproductivo
www.P65Warnings.ca.gov LBY0057

In keeping with its policy of continuous progress and product improvement, First Co. reserves the right to make changes without notice. Maintenance for all First Co. products is available under "Product Maintenance" at www.firstco.com.

WCX12-BB Series

ELECTRICAL DATA 208/230V - 1PH - 60 Hz						
UNIT MODEL	COMPRESSOR		CONDENSER FAN		MIN. CIR. AMPACITY	MAX. HACR BREAKER
	LRA	RLA	FLA	HP		
18WCX12-BB	48	9.0	1.2	1/4	13	20
24WCX12-BB	58.3	12.8	1.2	1/4	18	30
30WCXA12-BB	73	14.1	2.8	1/3	21	30

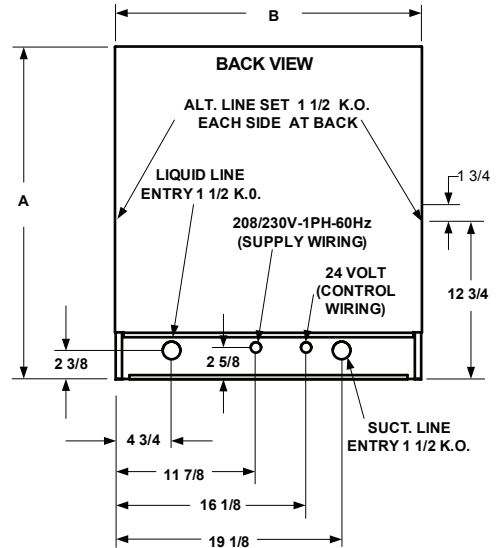
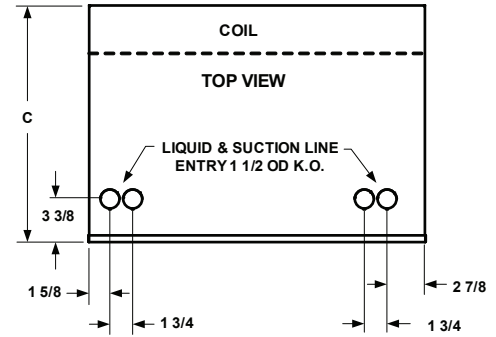
NOTE:
Compressor start assist devices (capacitor and start potential relay) may be required on WCX units with scroll compressors for installations with long line length, unusually high or low ambient operating conditions, thermostatic expansion valves or any other situation which can lead to slow off cycle pressure equalization and excessive compressor starting problems.

CERTIFIED COMBINATION RATINGS (1)			
UNIT MODEL	TOTAL BTUH COOLING	SEER	INDOOR COIL
18WCX12-BB	18,000	12.0	20VOHBX
24WCX12-BB	23,800		32VOHBX
30WCXA12-BB	27,800		RBHP-21J***

(1) SEER and capacity information are tested combination ratings and certified by First Co. to the U.S. Department of Energy. DOE maintains a public database that includes a complete listing of all appliance certifications. To view (and search) this listing, go to: <http://www.regulations.doe.gov/certification-data/>

PHYSICAL DIMENSIONS					
UNIT MODEL	A	B	C	LIQ/SUCT. LINE CONN. (SWEAT)	APPROX. SHIP WT.
18WCX12-BB	28	25-3/4	19	3/8 O.D. / 3/4 O.D.	200
24WCX12-BB					
30WCXA12-BB					

NOTE:
R-410A refrigerant oil is not compatible with R-22 oil. Therefore, when R-410A outdoor units are replacing existing R-22 outdoor units, the indoor evaporator coil must be replaced with a new one, the coil must include an R-410A TXV, and the interconnecting refrigerant lines flushed.



NOTE:
Liquid line valve is located on left side.
Suction line valve is located on right side.



In keeping with its policy of continuous progress and product improvement, First Co. reserves the right to make changes without notice. Maintenance for all First Co. products is available under "Product Maintenance" at www.firstco.com.

OPT. ARCH. GRILLE (FIELD INSTALLED)				
PART NUMBER	FOR USE ON	DIMENSIONS		
		H	W	D
G200BBA	18WCX12-BB 24WCX12-BB 30WCXA12-BB	28	25-3/4	1-1/4

NOTES:
1. G200BBA has clear anodized finish.
2. Grille screws to the "face" of the condensing unit in place of the factory wire guard.



(Optional Architectural Grille)

Catalog No. WCX(A)321 (Replaces wcx(a)1020)